

How to set up a qPCR experiment on the ViiA7

1. Spin down your transparent 384-well plate and put a sealer.
2. On the touch screen ViiA7 machine press "Power" at the bottom left then "Eject" on the bottom right.
3. Place the plate with well A1 at the top left corner. Press "Eject".
4. On the ViiA7 software's main menu, click **Experiment Setup**.



5. Complete the information page:
 - The name and date of your project
 - 384-well Block
 - Standard Curve or Comparative CT ($\Delta\Delta Ct$)
 - TaqMan or SYBR
 - Fast (if using plates from the platform)

Experiment: 2014-03-19 13:43:37 Type: Comparative Ct ($\Delta\Delta Ct$) Reagents: TaqMan® Reagents

How do you want to identify this experiment?

Experiment Name: 2014-03-19 134337 Comments:

Custom:

User Name:

Which block are you using to run the experiment?

384-Well Block Array Card Block 96-Well Block (0.2ml) Fast 96-Well Block (0.1ml)

What type of experiment do you want to set up?

Standard Curve Relative Standard Curve Comparative Ct ($\Delta\Delta Ct$) Melt Curve

Genotyping Presence/Absence

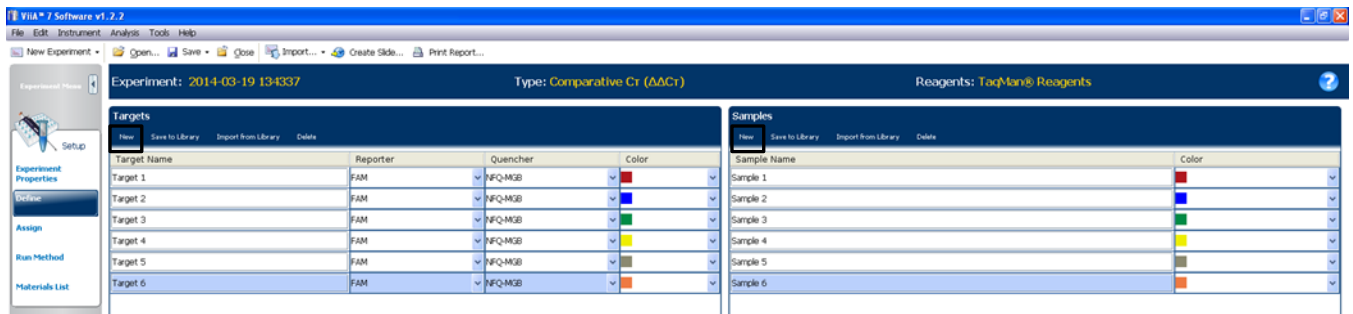
Which reagents do you want to use to detect the target sequence?

TaqMan® Reagents SYBR® Green Reagents Other

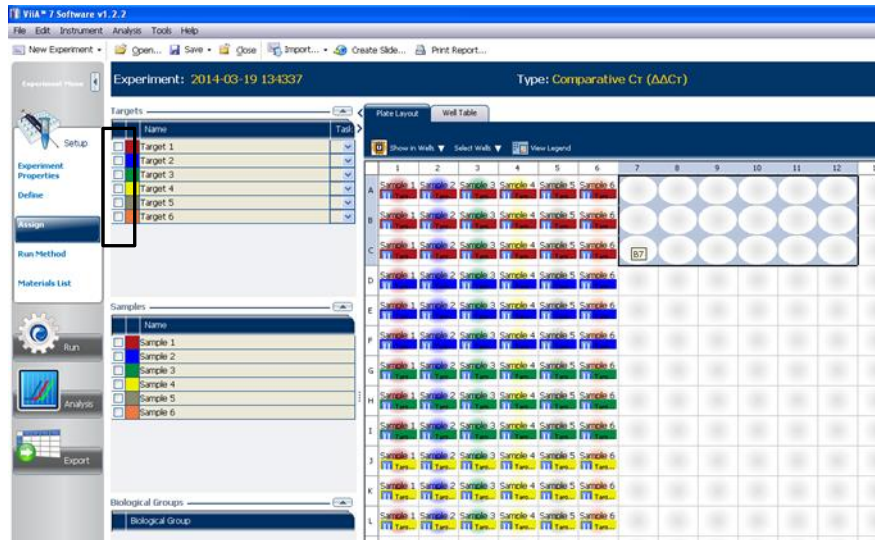
What properties do you want for the instrument run?

Standard Fast

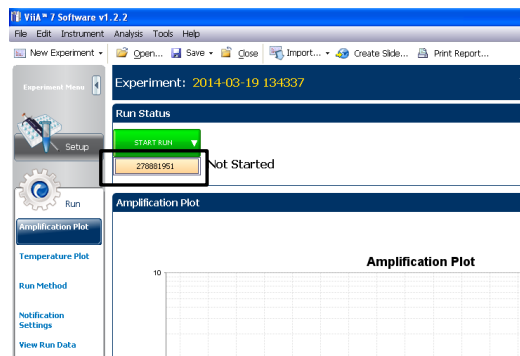
6. In the left menu, click **Define**.
7. Enter the name of your genes. Click on "New" to add.
8. Enter the name of your samples. Click on "New" to add.



9. In the left menu, click **Assign**.
10. Assign each sample and each gene by selecting their corresponding wells.



11. If using a specific protocol, click **Run Method** in the left menu and change the parameters manually. Otherwise, do not modify the program.
12. Save the file on the hard disk. Create a folder under your name :
 - D: \ Applied Biosystems \ Via7 Software v1.2 \ experiments
13. In the left menu, click **Run**, and then click the green **Start Run** button.



14. Vous pouvez transférer votre fichier du dossier D:\ à votre dossier sur le P:\